

Datasheet for #sbcw2833 DN

Recommendations:

Please read the starter kit user manual (at least installation chapter 5), if available, and have a look at the FAQ at <http://www.alpeslasers.ch/alfaq.pdf>

WARNING: Operating the laser with higher current or voltage than specified in this document may cause damage and will result in loss of warranty, unless Alpes Lasers has permitted to do so!

WARNING: Beware of the polarity of the laser. This laser has to be powered with negative current on the laser contact (= bonding pad, corresponding to the label "laser" on the LLH) and the positive current on the base contact (= submount, corresponding to the label "base" on the LLH). To use with a power-supply ILX Lightwave LDX-3232 or equivalent.



Figure 1: Support mounting for #sbcw2833 DN (please note that the laser is connected to the DN pad drawn in blue)

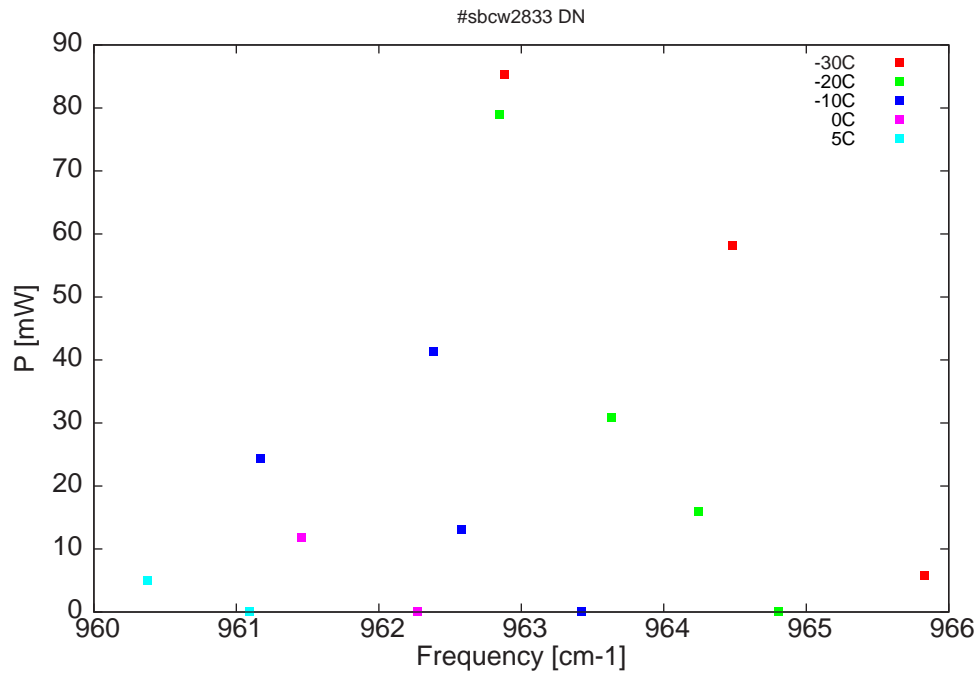


Figure 2: Output power as a function of the singlemode emission frequencies and temperatures

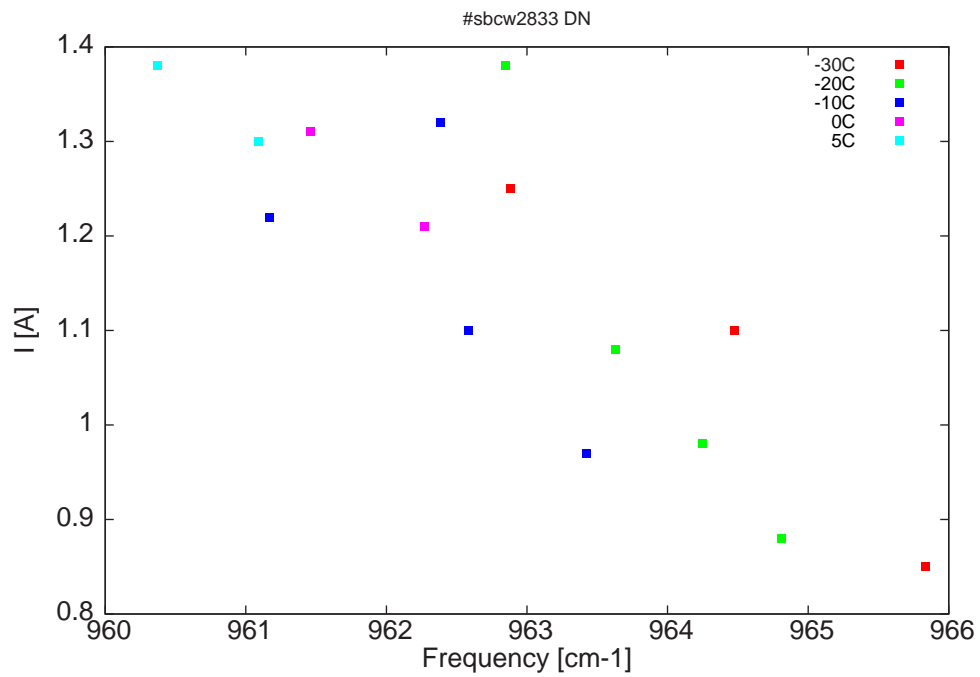


Figure 3: Applied DC current as a function of singlemode emission frequencies and temperatures

λ [nm]	ν [cm ⁻¹]	P[mW]	Temp[°C]	U_{LASER} [V]	I[A]
10353.8	965.8	5.8	-30	8.8	0.85
10368.3	964.5	58.2	-30	9.6	1.1
10385.5	962.9	85.3	-30	10.1	1.25
10364.8	964.8	0.1	-20	8.8	0.88
10370.8	964.2	16	-20	9.2	0.98
10377.4	963.6	30.9	-20	9.5	1.08
10385.8	962.8	78.9	-20	10.6	1.38
10379.7	963.4	0.1	-10	9.1	0.97
10388.7	962.6	13	-10	9.6	1.1
10404	961.2	24.4	-10	10	1.22
10390.9	962.4	41.3	-10	10.4	1.32
10392.1	962.3	0.1	0	9.9	1.21
10400.9	961.5	11.9	0	10.3	1.31
10404.8	961.1	0.2	5	10.3	1.3
10412.6	960.4	5	5	10.6	1.38

Table 1 : singlemode optical output power as function of operating parameters

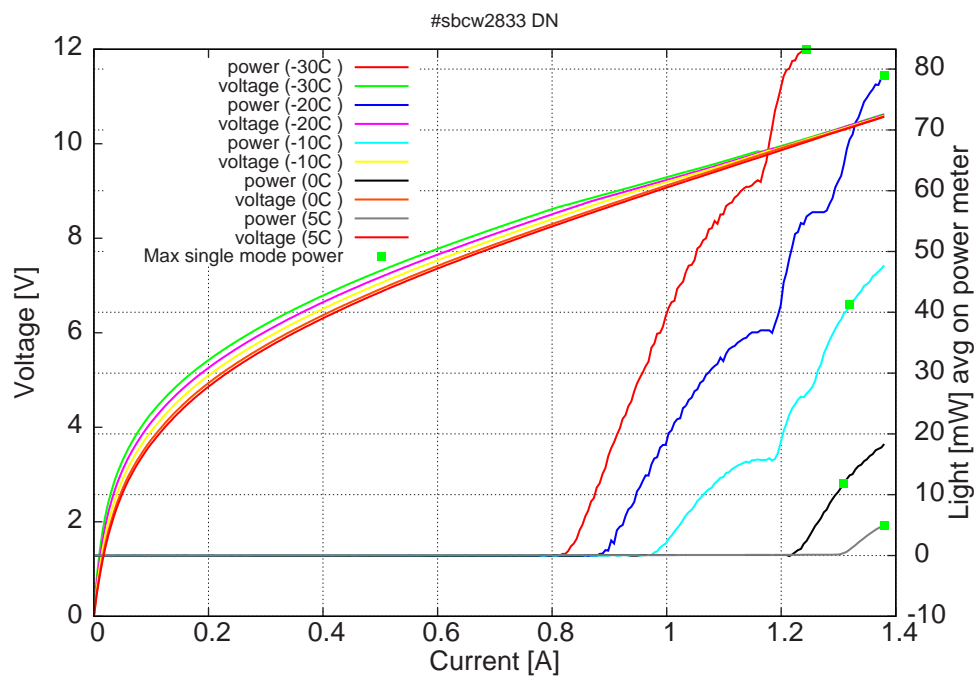


Figure 4: voltage and avg power vs current in continuous-wave operation (the solid squares indicate the maximum singlemode emitted power)

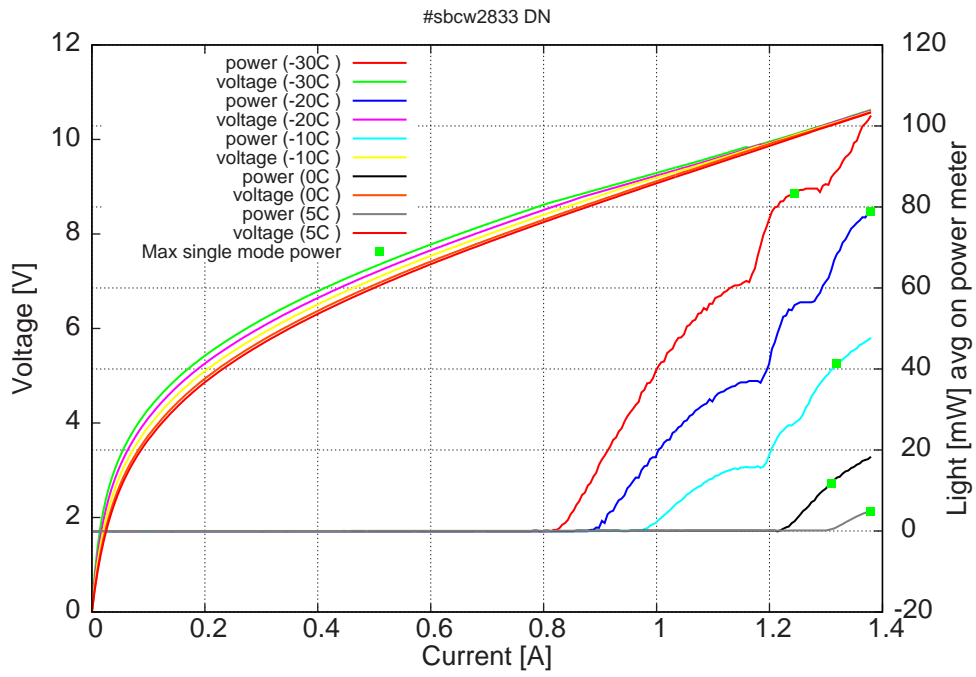
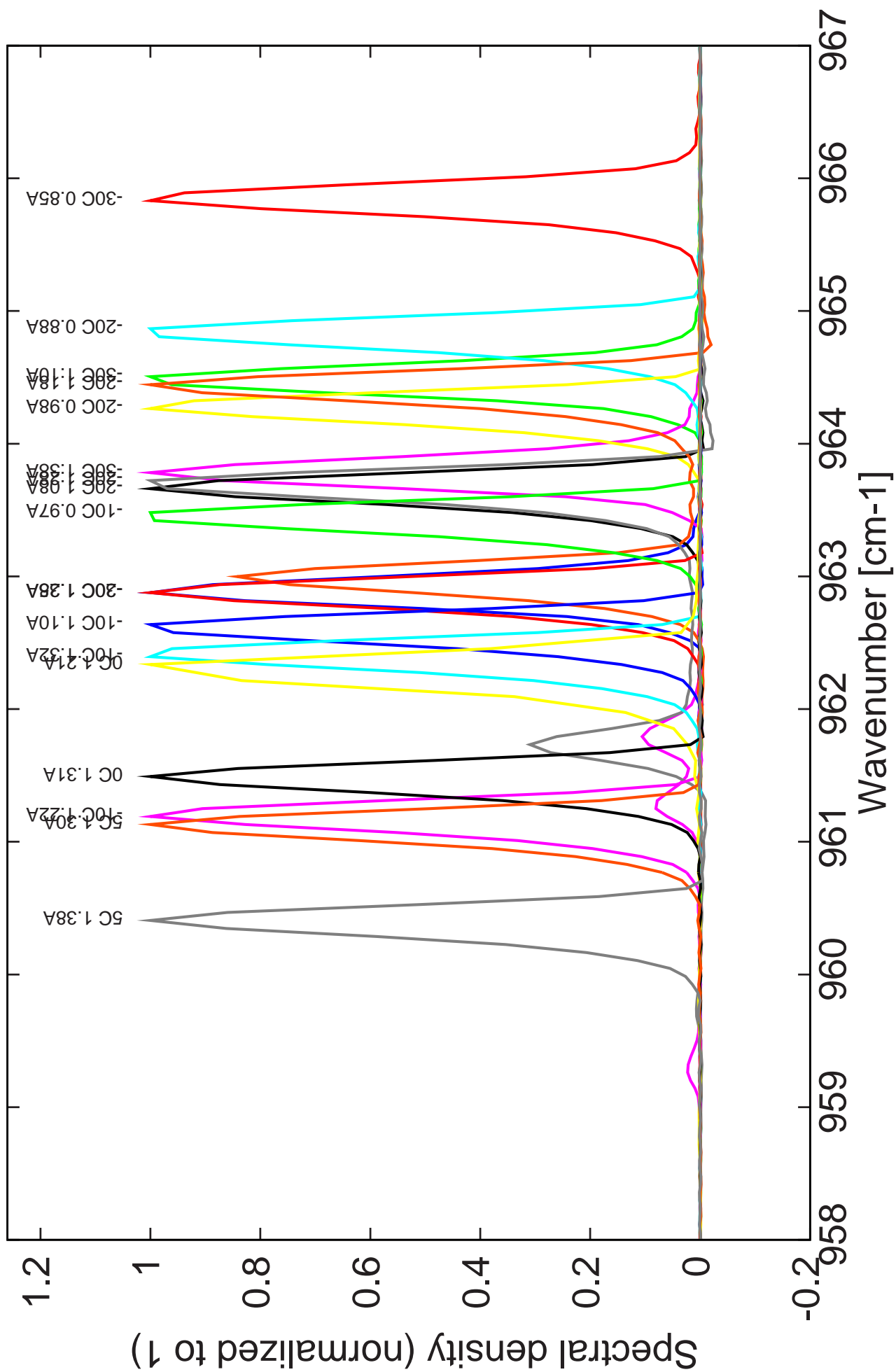


Figure 5: voltage and avg power vs current in continuous-wave operation (including the multimode region)

Note: at -30C: $I_{th}=820\text{mA}$ / $V_{th}= 8.7\text{V}$ (2-wires measurements). Maximum operation current: 1.38A for all temperatures.

Figure 4: spectra at different temperatures for various DC currents



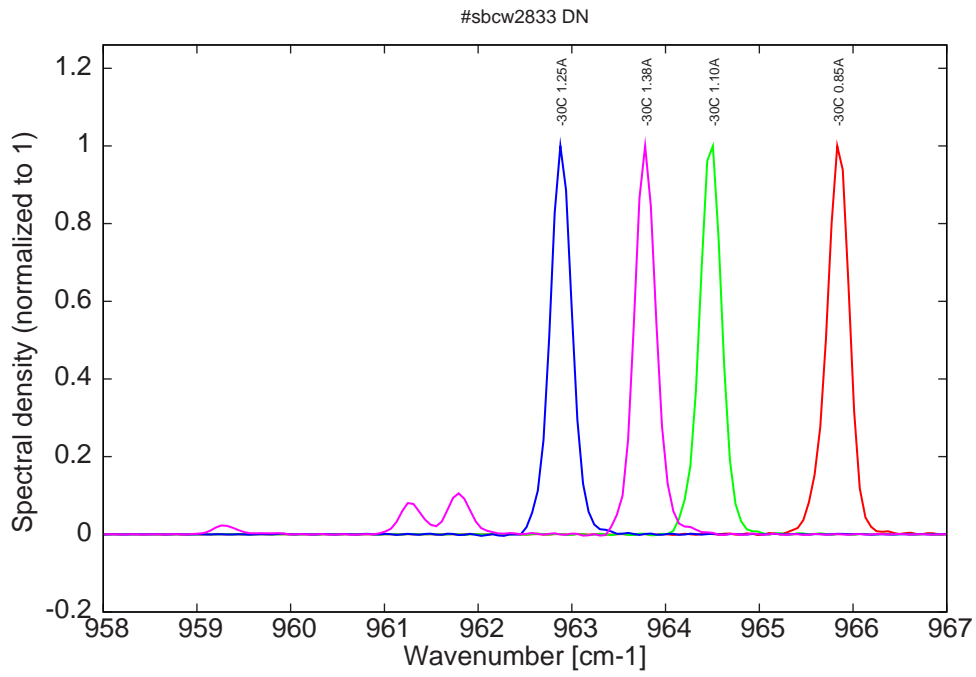


Figure 6: spectra at -30C for various DC currents (monomode up to 1.25A)

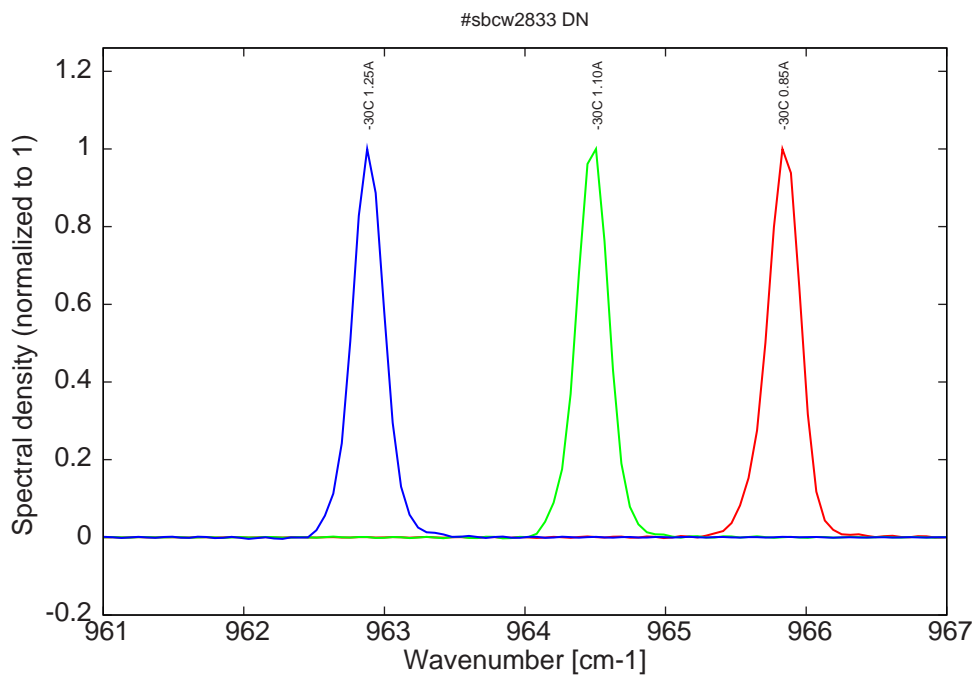


Figure 7: spectra at -30C for various DC currents (monomode range with mode jumping between 1.10A and 1.25A, see Fig. 3)

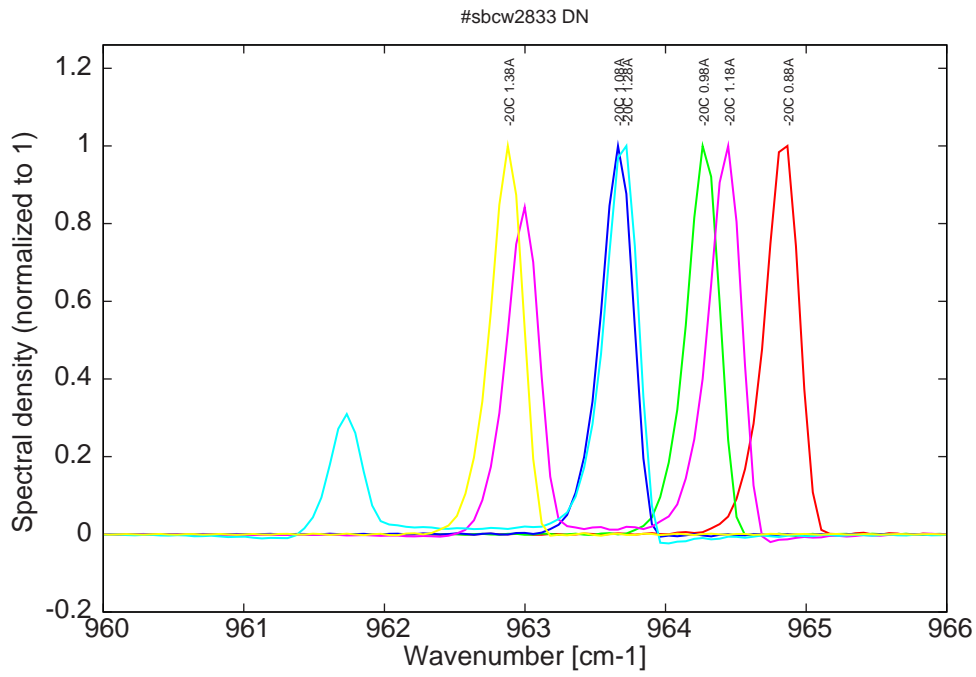


Figure 8: spectra at -20C for various DC currents (monomode up to 1.08A then bimode and again monomode for I=1.38A)

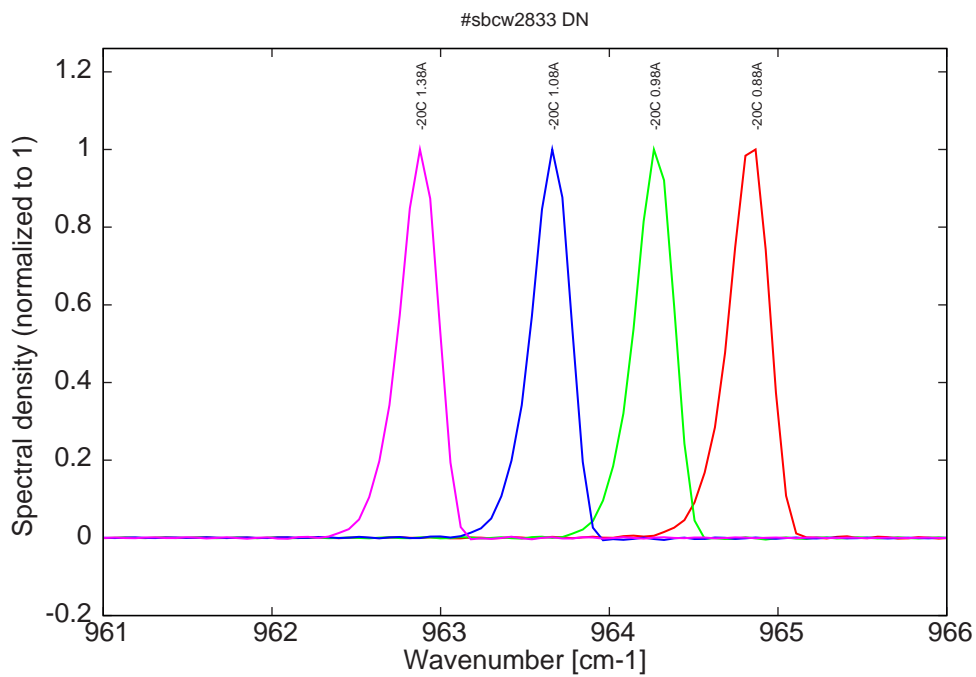


Figure 9: spectra at -20C for various DC currents (monomode range with mode jumping between 1.08A and 1.38A, see Fig. 3)

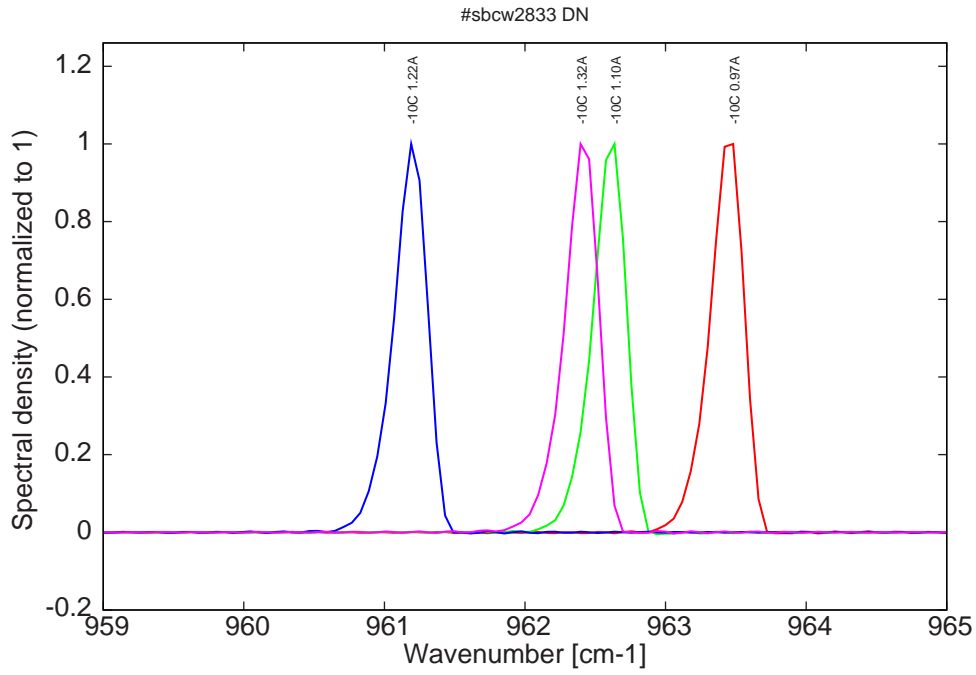


Figure 10: spectra at -10C for various DC currents (all monomode but with 2 modes jumping, one between 0.98A and 1.22A and the second between 1.22A and 1.32A, see Fig. 3)

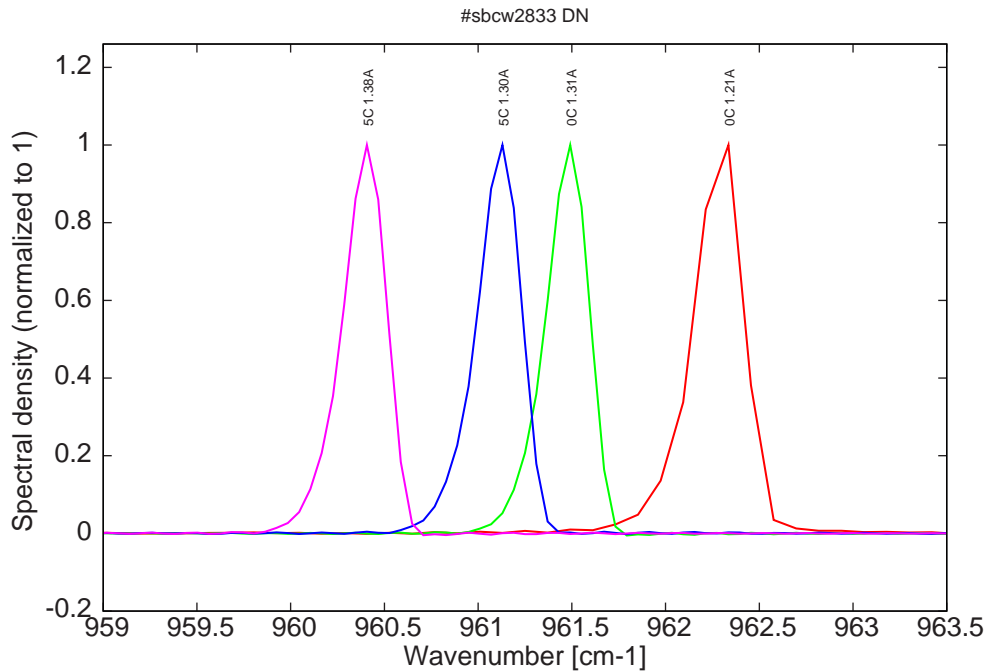


Figure 11: spectra between 0C and 5C for various DC currents (all monomode on the same mode, see Fig. 3)