

Datasheet for #sb2047 DN

Recommendations:

Please read the starter kit user manual (at least installation chapter 5), if available, and have a look at the FAQ at <http://www.alpeslasers.ch/alfaqa.pdf>

WARNING: Operating the laser with longer pulses, shorter period, or higher voltage or current than specified in this document may cause damage and will result in loss of warranty, unless agreed upon with Alpes Lasers!

WARNING: Beware of the polarity of the laser. This laser has to be powered with negative bias on the laser contact (= bonding pad, corresponding to the label "laser" on the LLH) and the positive bias on the base contact (= submount, corresponding to the label "base" on the LLH).

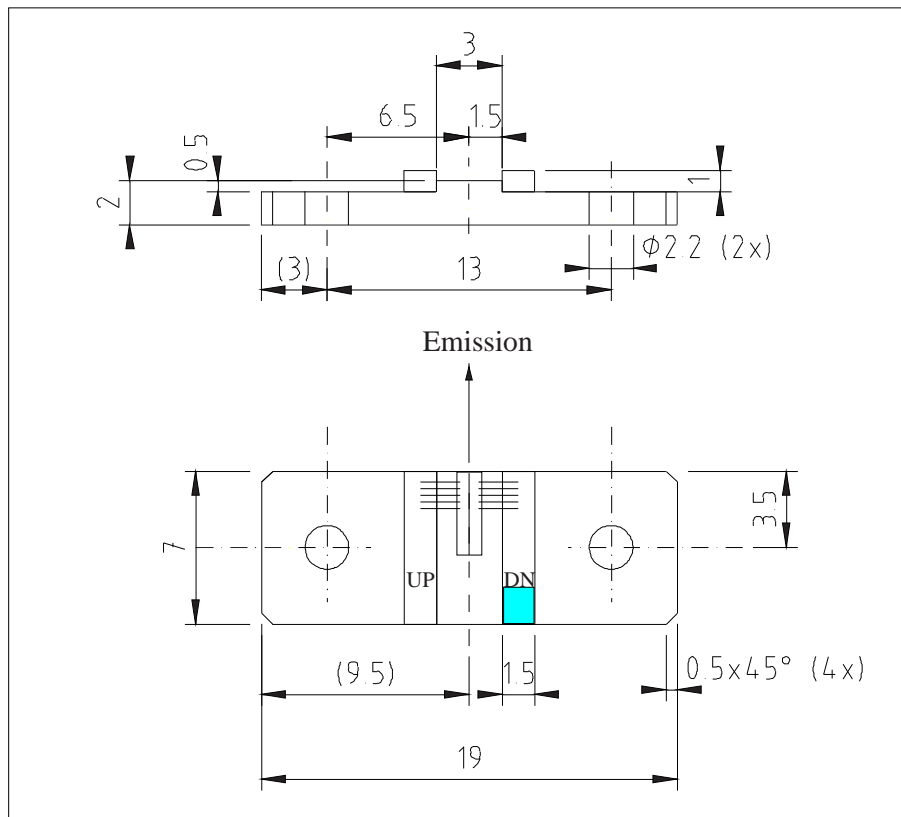


Figure 1: Support mounting for #sb2047 DN (please note that the laser is connected to the DN pad drawn in blue)

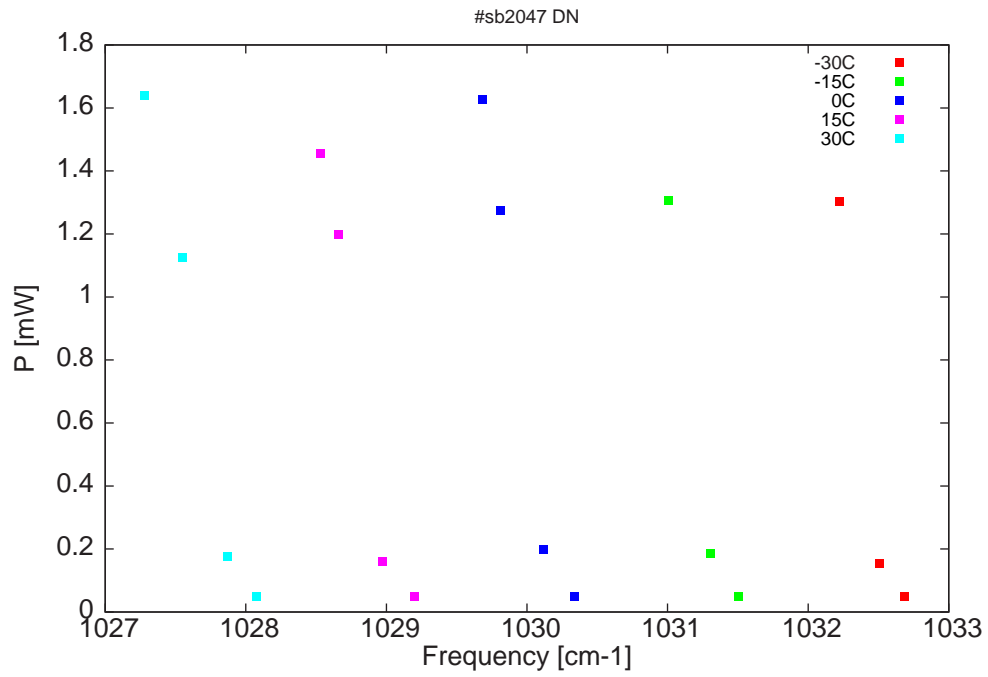


Figure 2: Output power as a function of the singlemode emission frequencies and temperatures

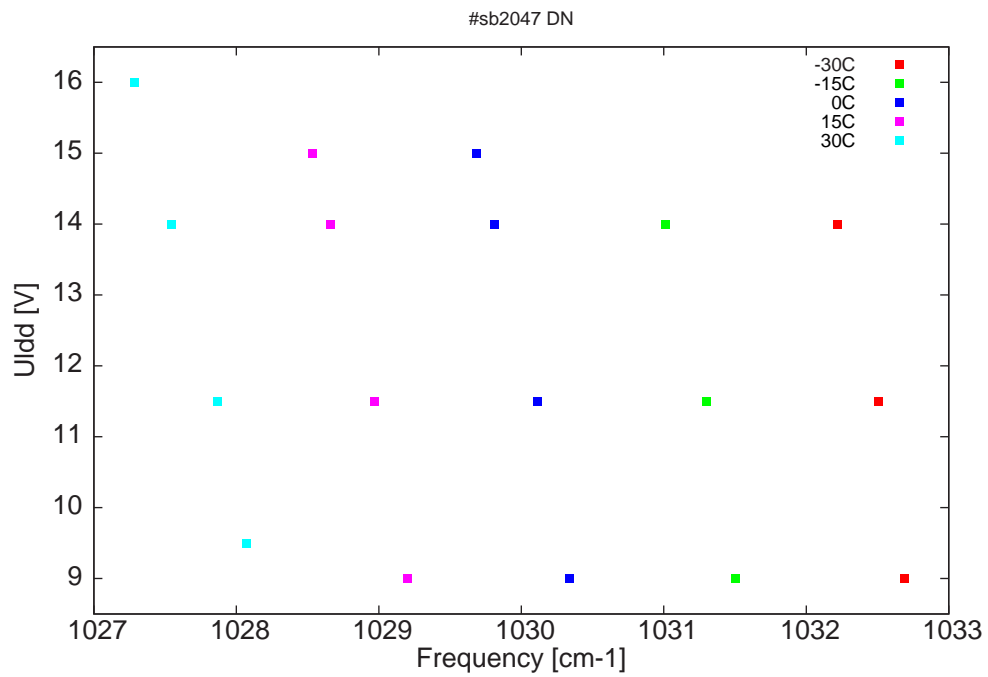


Figure 3: DC voltage fed to LDD (U_{ldd}) as a function of the singlemode emission frequencies and temperatures

λ [nm]	ν [cm ⁻¹]	P[mW]	Temp[°C]	U_{LDD} [V]	I_{pulse} [A]
9683.5	1032.7	0.1	-30	9	0.48
9685.2	1032.5	0.2	-30	11.5	0.87
9687.8	1032.2	1.3	-30	14	1.35
9694.6	1031.5	0.1	-15	9	0.54
9696.5	1031.3	0.2	-15	11.5	0.94
9699.2	1031	1.3	-15	14	1.43
9705.5	1030.3	0.1	0	9	0.6
9707.7	1030.1	0.2	0	11.5	1.01
9710.5	1029.8	1.3	0	14	1.5
9711.7	1029.7	1.6	0	15	1.67
9716.3	1029.2	0.1	15	9	0.67
9718.5	1029	0.2	15	11.5	1.08
9721.4	1028.7	1.2	15	14	1.55
9722.6	1028.5	1.5	15	15	1.73
9726.9	1028.1	0.1	30	9.5	0.79
9728.9	1027.9	0.2	30	11.5	1.15
9731.9	1027.5	1.1	30	14	1.62
9734.4	1027.3	1.6	30	16	1.96

Table 1 : singlemode optical output power as function of operating parameters

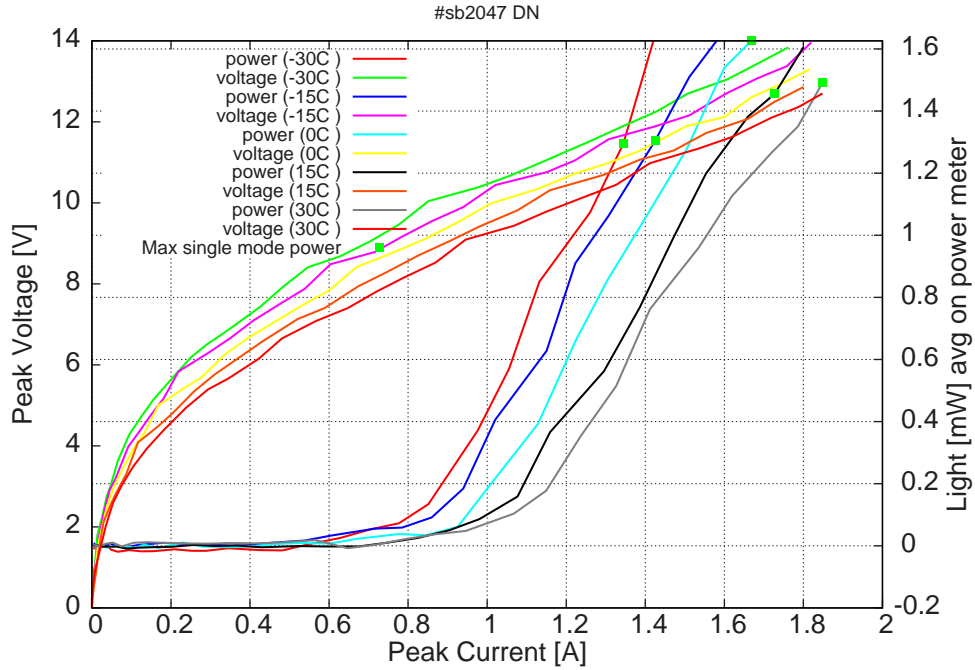


Figure 4: peak voltage and average power vs peak current at 2% duty-cycle (50ns pulses on the laser, 2.5 μ s period) (the solid squares indicate the maximum singlemode emitted power)

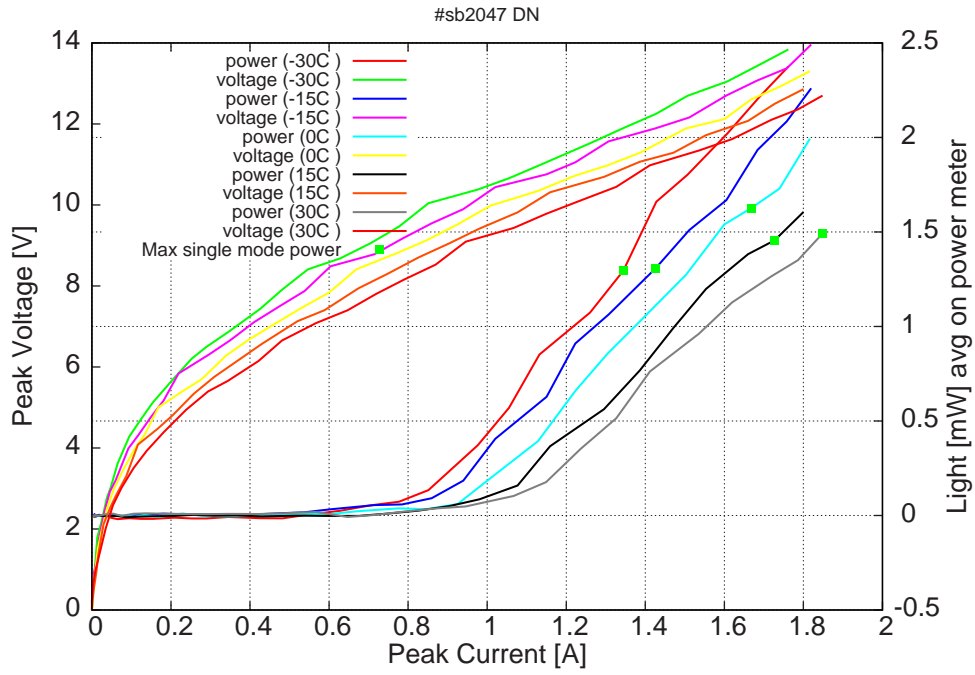


Figure 5: peak voltage and average power vs peak current at 2% duty-cycle (50ns pulses on the laser, 2.5μs period) (including the multimode region)

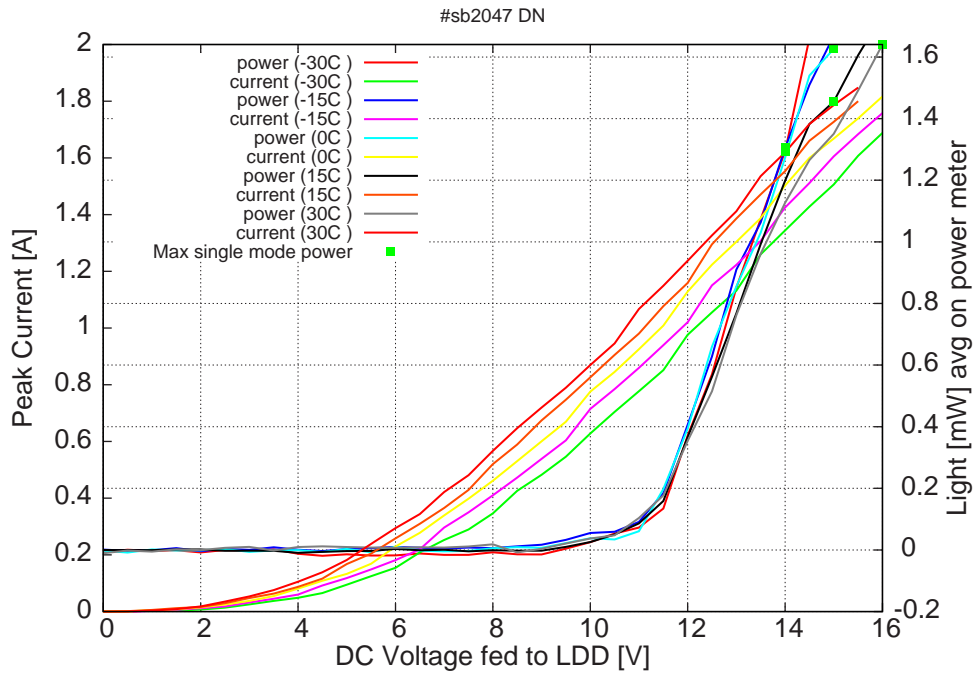


Figure 6: peak current and average power vs LDD voltage at 2% duty-cycle (50ns pulses on the laser, 2.5μs period) (the solid squares indicate the maximum singlemode emitted power)

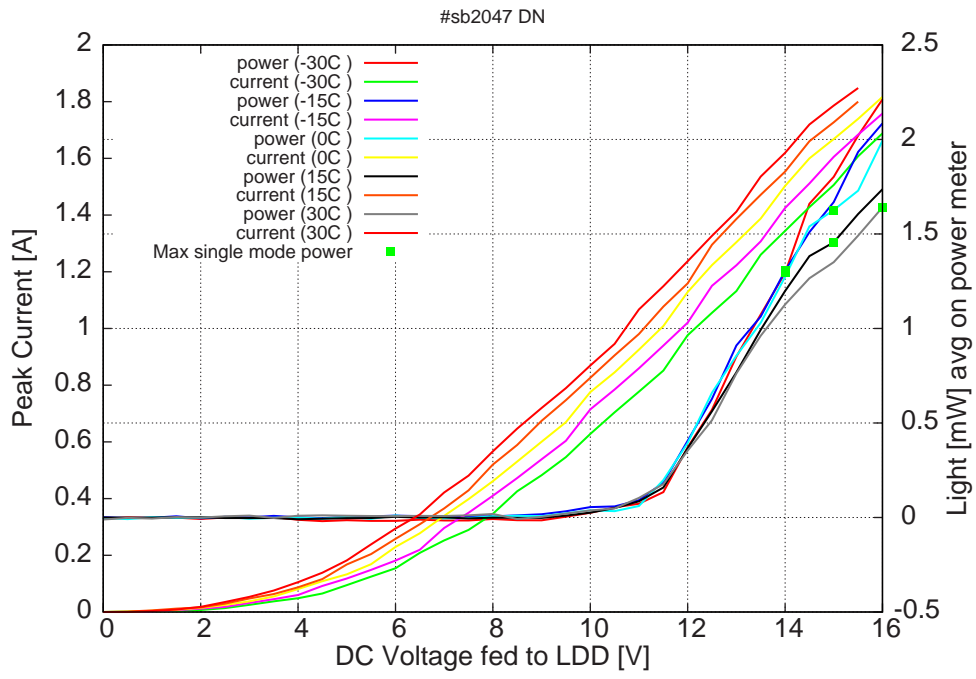
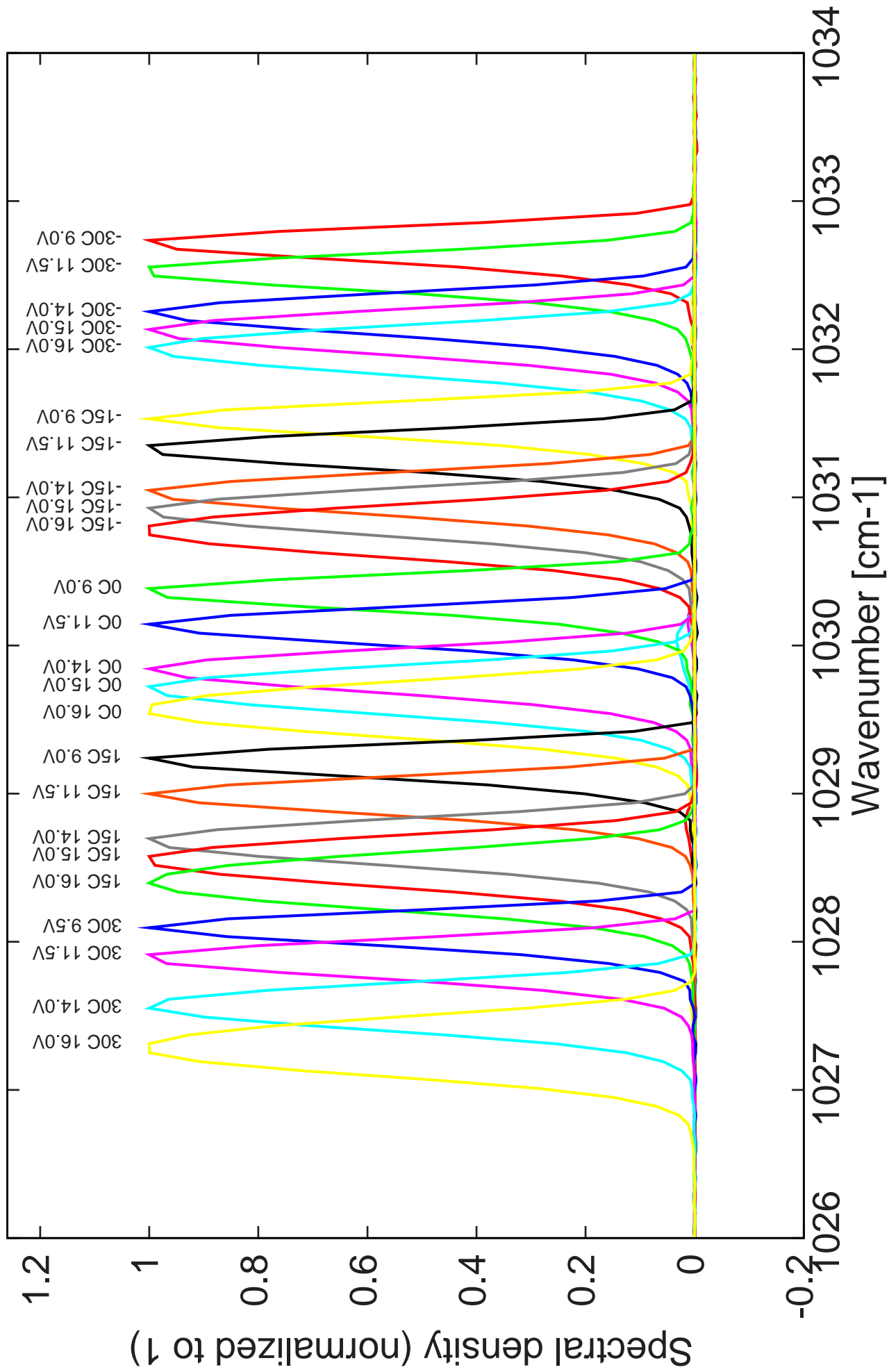


Figure 7: peak current and average power vs LDD voltage at 2% duty-cycle (50ns pulses on the laser, $2.5\mu\text{s}$ period) (including the multimode region)

Figure 6: spectra at different temperatures for various LDD voltage



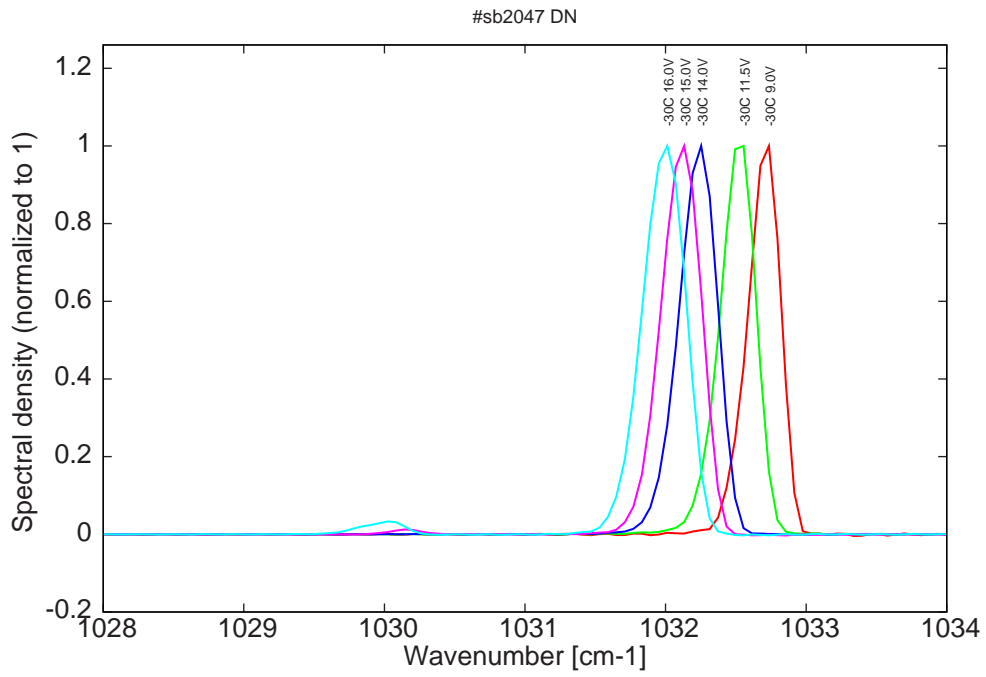


Figure 8: spectra at -30C for various LDD voltage

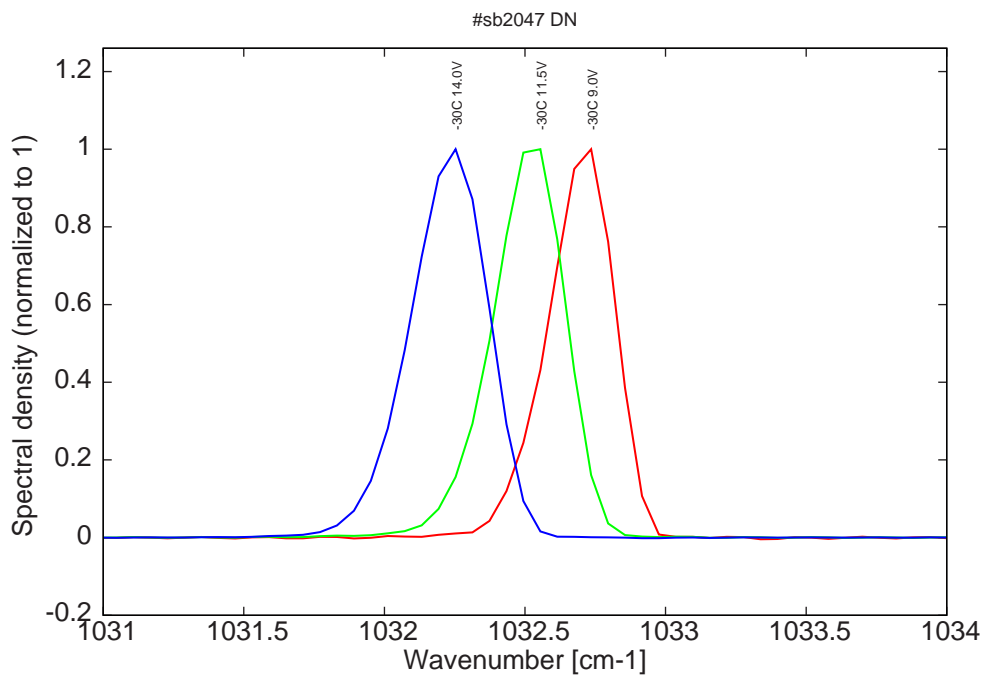


Figure 9: spectra at -30C for various LDD voltage (monomode range)

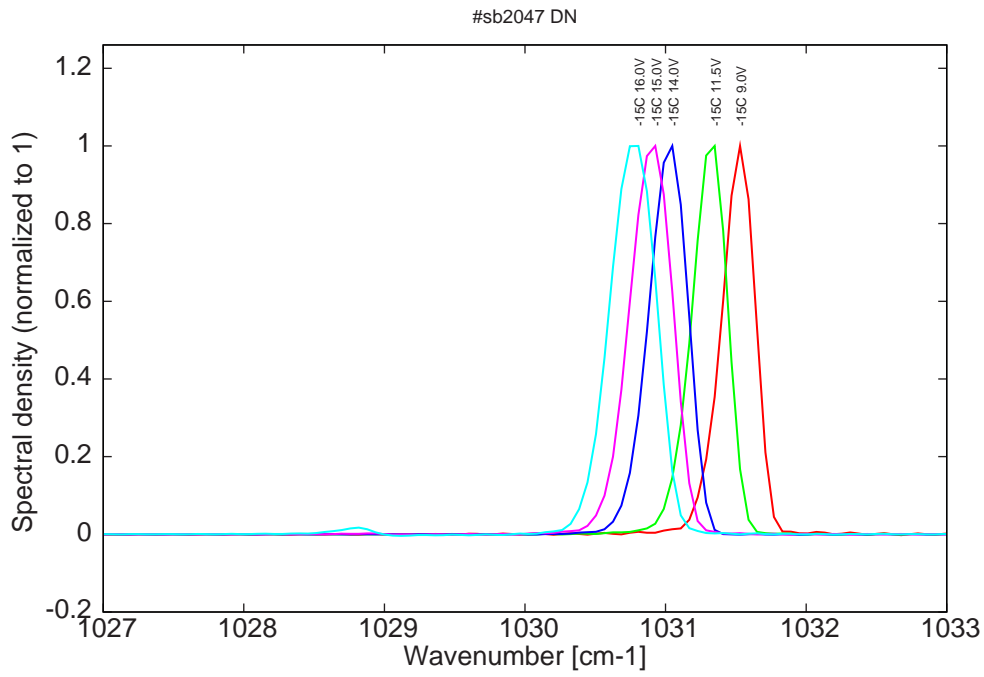


Figure 10: spectra at -15C for various LDD voltage

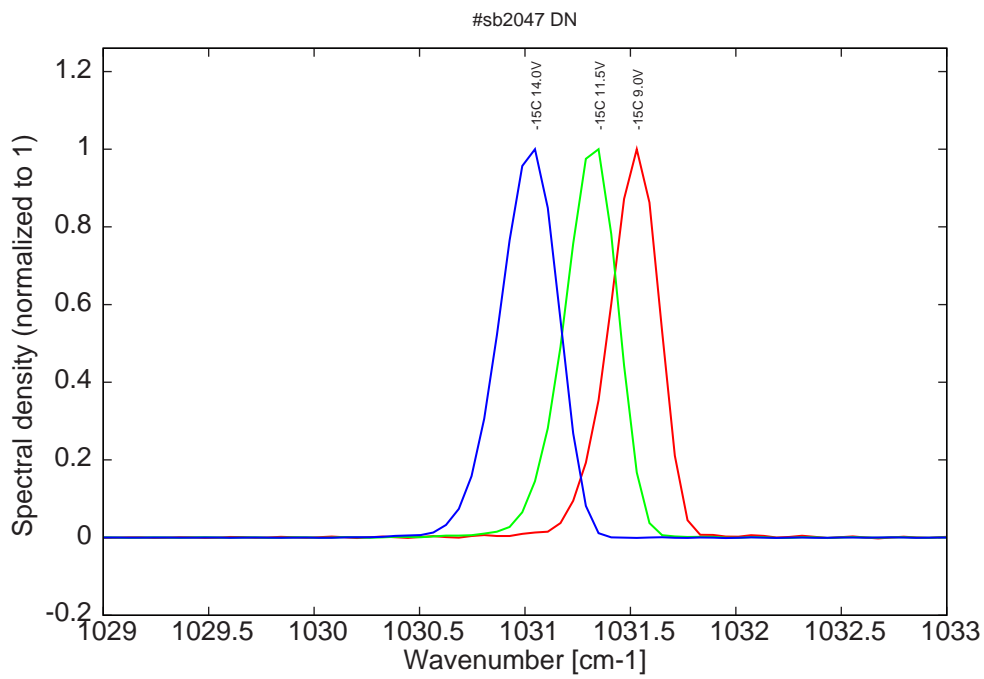


Figure 11: spectra at -15C for various LDD voltage (monomode range)

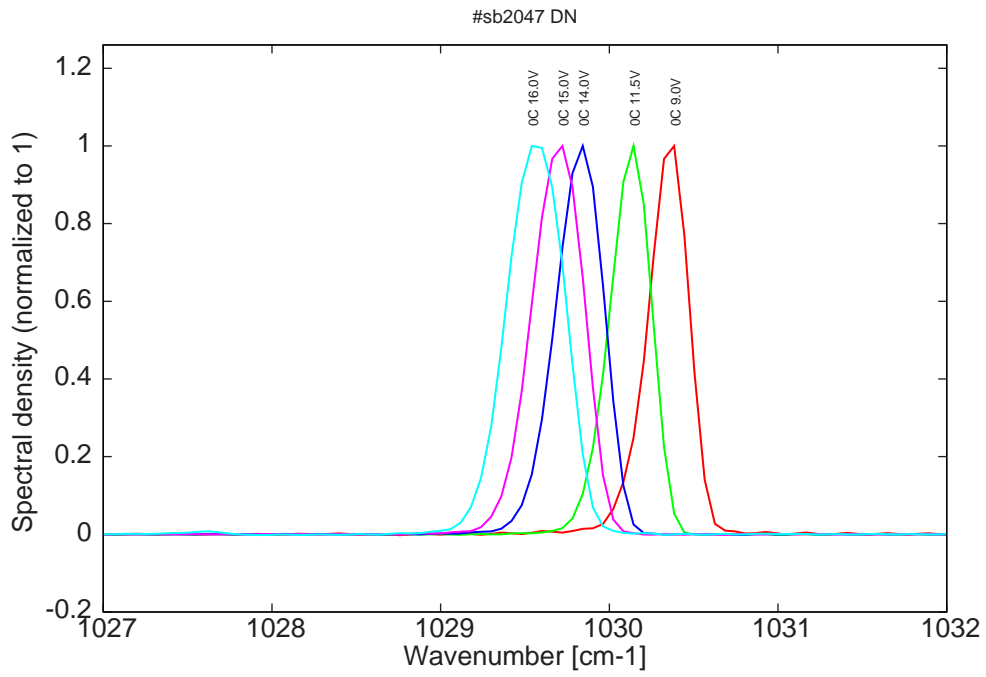


Figure 12: spectra at 0C for various LDD voltage

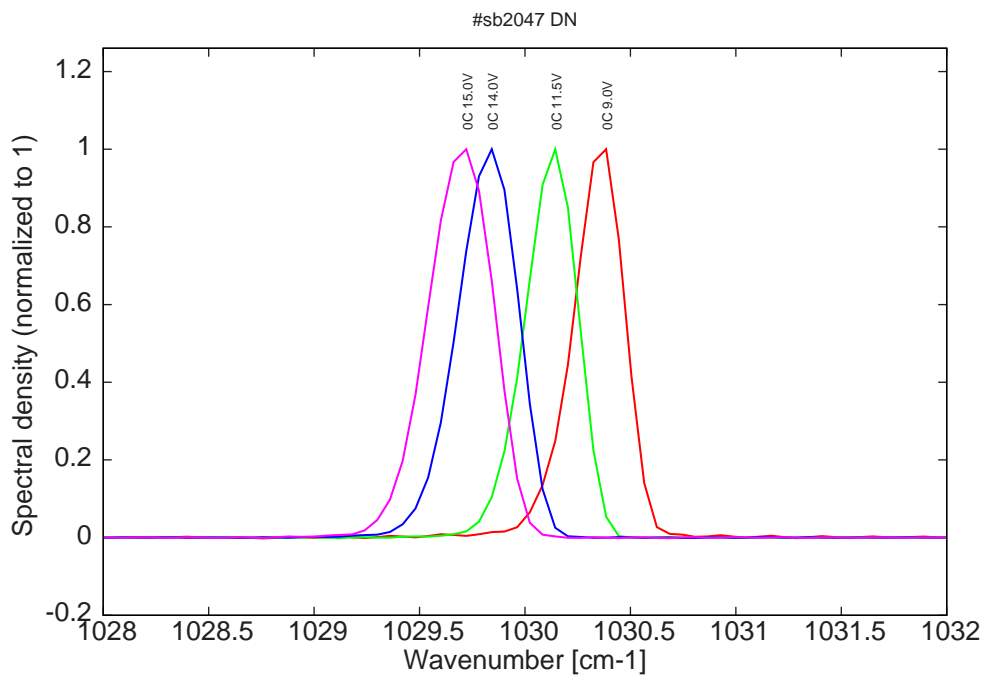


Figure 13: spectra at 0C for various LDD voltage (monomode range)

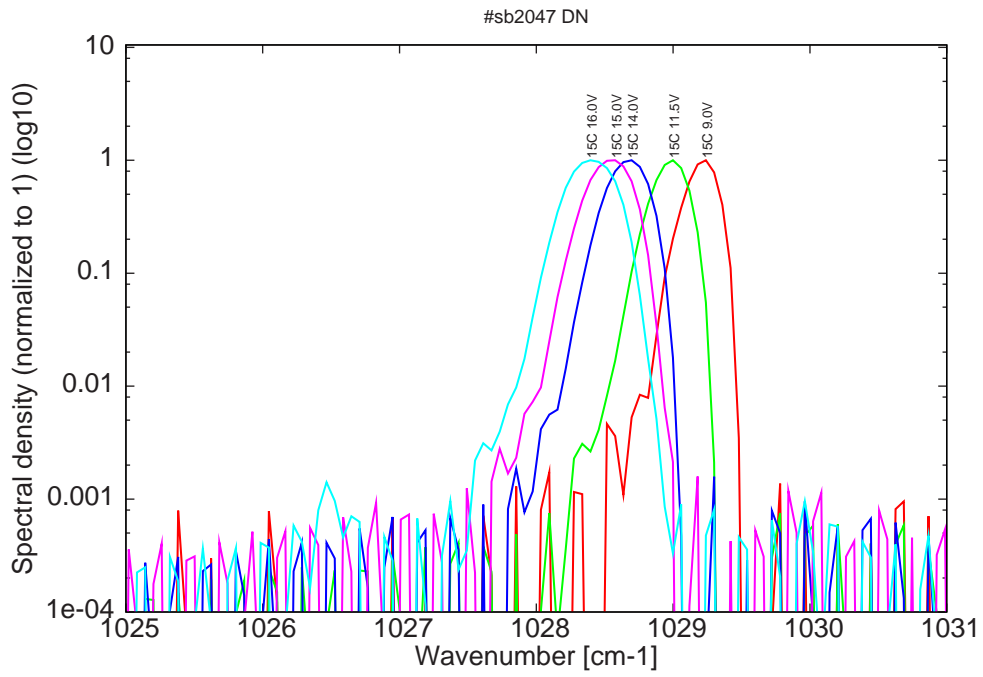


Figure 14: spectra at 15C for various LDD voltage (small mode around 1026.5cm-1 at 16V on LDD)

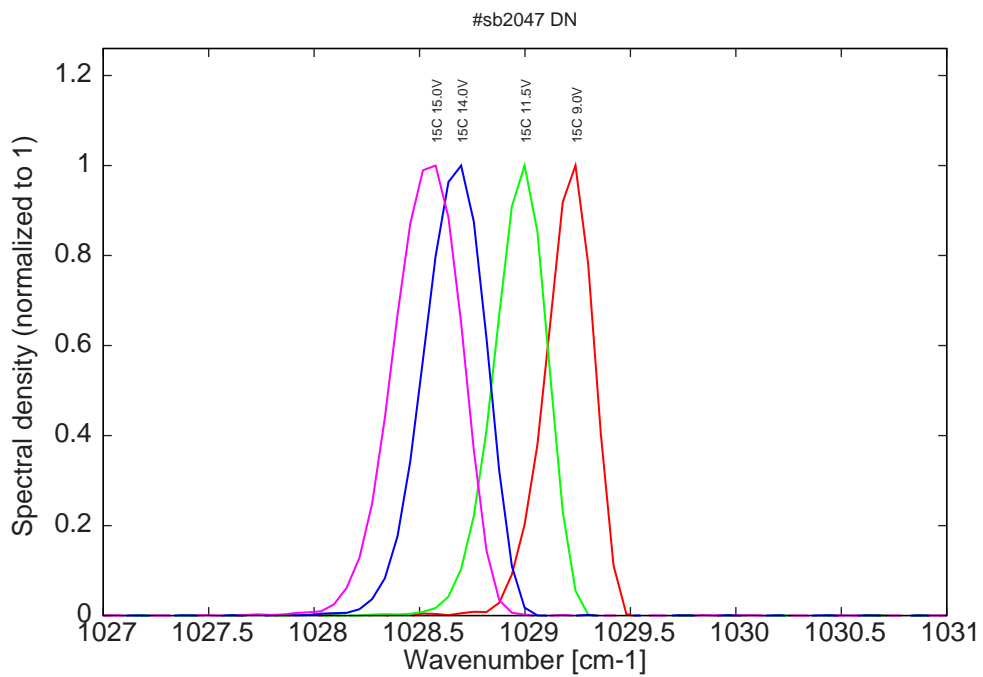


Figure 15: spectra at 15C for various LDD voltage (monomode range)

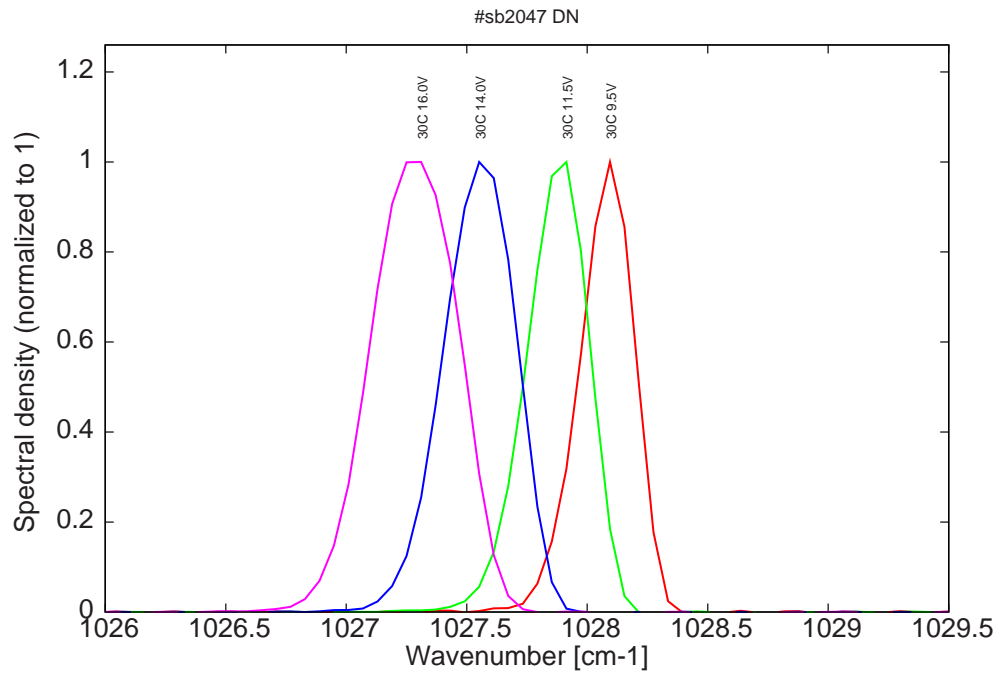


Figure 16: spectra at 30C for various LDD voltage (all monomode)